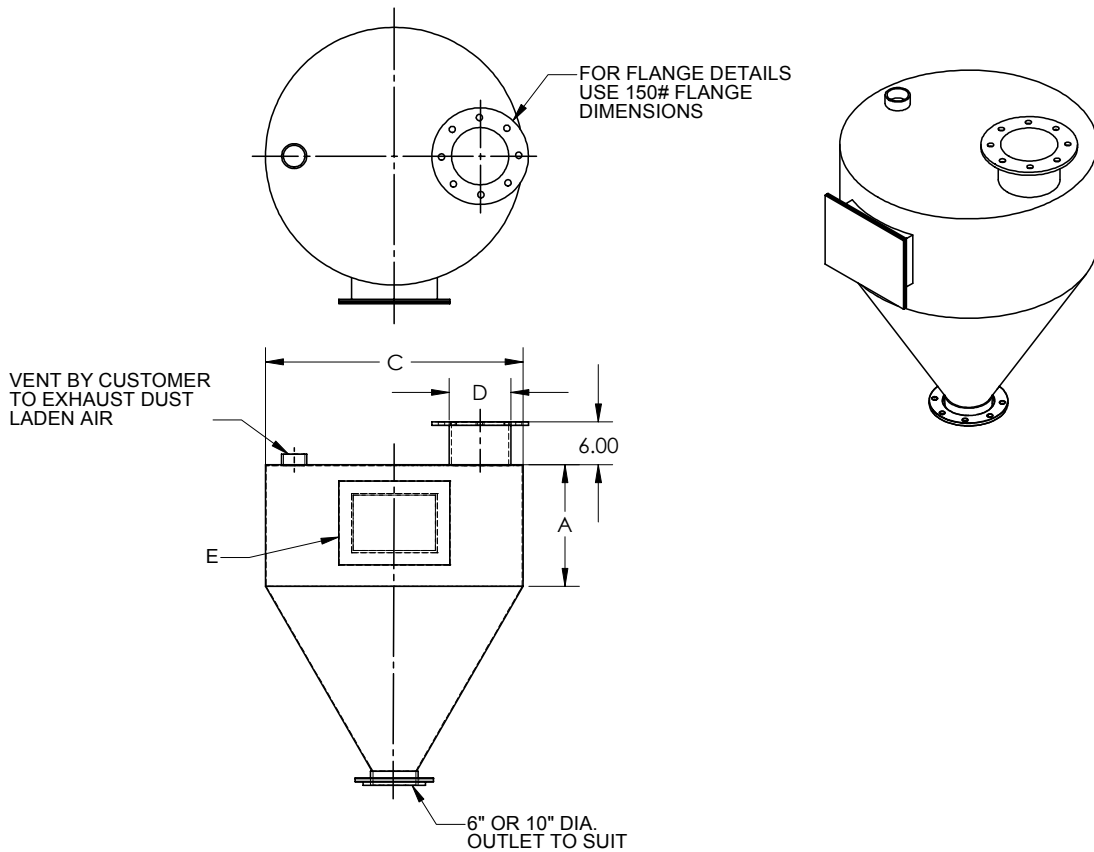


DENSE FLOW SURGE HOPPER



NOM. CAPACITY	A	B	C	D	E	PART #
1CF	2'-3"	8"	18"	6"	4" DIA.	DF35202
5CF	3'-8"	1'-9"	24"	6"	7 X 5	DF35203
7CF	3'-10"	1'-0"	36"	8"	7 X 5	DF35204
10CF	4'-3"	1'-5"	36"	8"	7 X 5	DF35205
15CF	4'-9"	1'-6"	42"	8"	14 X 10	DF35206
25CF	5'-10"	2'-7"	42"	8"	14 X 10	DF35207
35CF	6'-11"	3'-7"	42"	8"	14 X 10	DF35208
OTHER CAPACITIES AVAILABLE UPON REQUEST						

THE DENSE FLOW SURGE HOPPER is fabricated from 10 GA. mild steel, however other wall thickness' and other materials are available upon specification. When ordering, specify nominal capacity (cubic feet) and part number.

APPLICATION: Normally, these dust tight hoppers are used on Pump Vessels with an inside closing cylinder assembly. The selected hopper must be sufficient to fill the Pump Vessel, during each charging cycle.

NOTE: Specifications and dimensions subject to change.