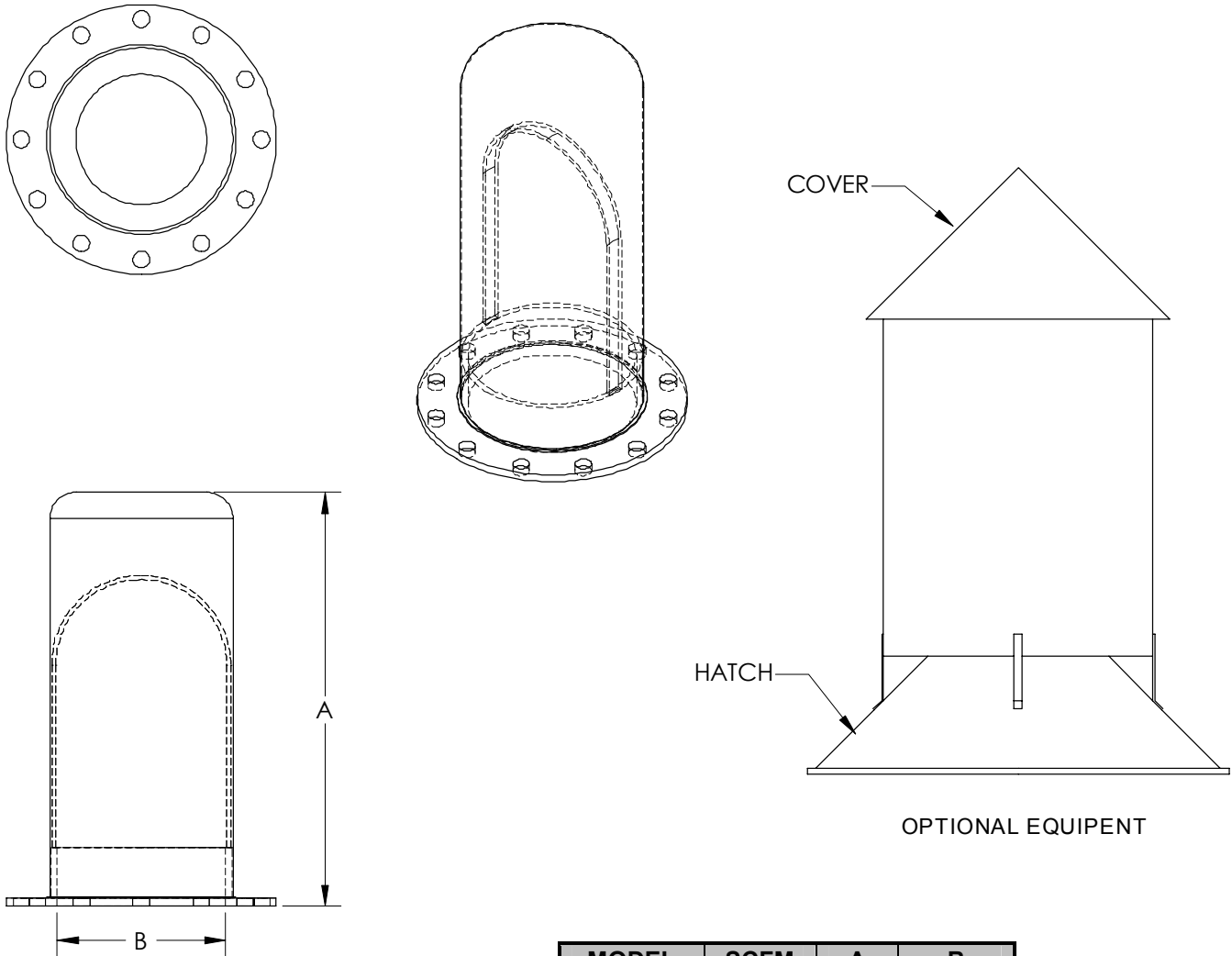


DENSE FLOW FILTER BAG BIN VENT



MODEL	SCFM	A	B
B5A	25	24.5"	10" DIA.
B15A	70	72.5"	10" DIA.
B5AE	25	24.5"	10" DIA.

THE DENSE FLOW FILTER BAG BIN VENT is used for separating clean air from the dust-laden air of the conveying system. They are normally used on bins or hoppers that are airtight and, therefore, a positive pressure inside the bin forces the air through the filter and no exhaust fan is required. Many custom configurations of the filter bag unit can be designed and manufactured by J.D.B. Dense Flow.

NOTE: Specifications and dimensions subject to change.