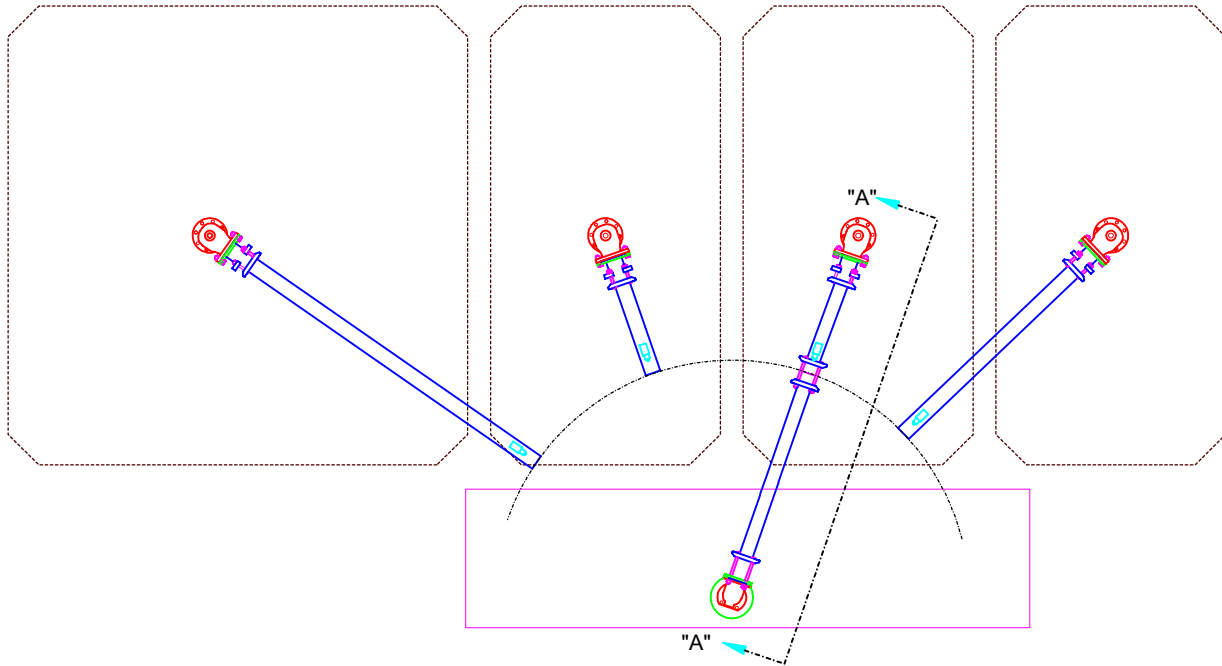
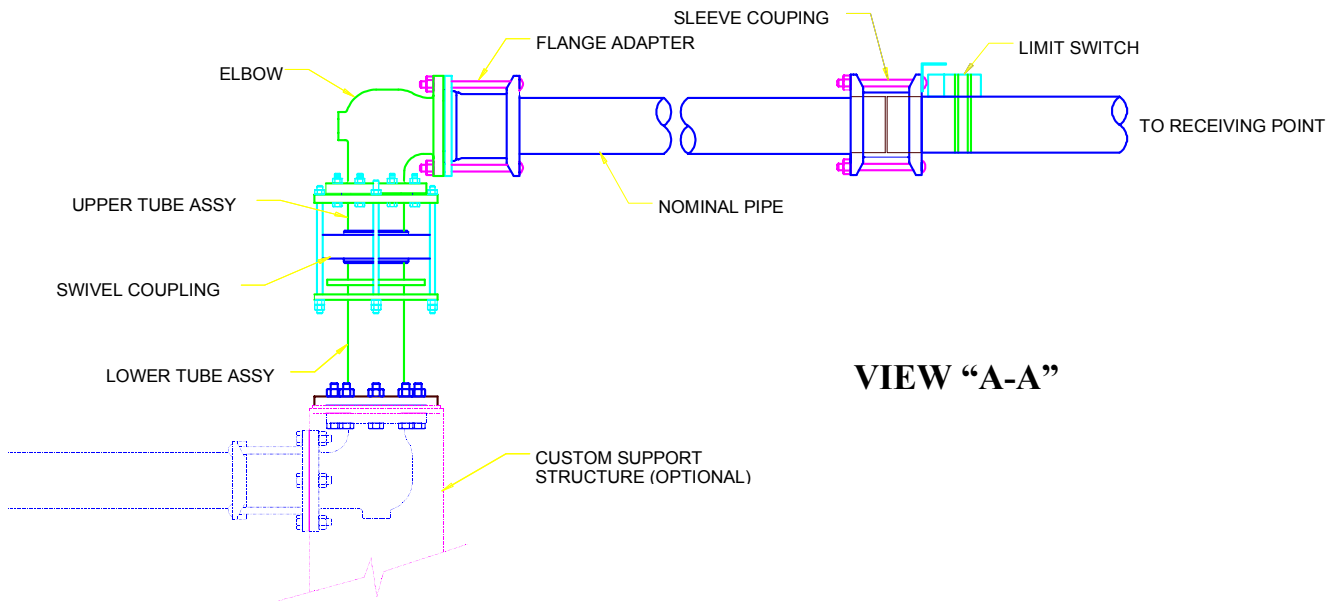


DENSE FLOW SWING PIPE DIVERTER



PLAN VIEW



VIEW "A-A"

THE DENSE FLOW SWING PIPE DIVERTER is designed to divert the flow of material to one of a number of receiving points. A limit switch on each of the receiving pipes is used for electrical safety interlocking. The Swing Pipe Diverter is located as close as possible to the receiving points.

NOTE: Specifications and dimensions subject to change.